



2023 Website - Conservation Conscious 2 pax

Windhoek - Okonjima Nature Reserve - Onguma Game Reserve - Ongava Private Game Reserve - Etosha National Park - Palmwag - Twyfelfontein - Swakopmund - Cape Cross - NamibRand Nature Reserve - Namib
13 Days / 12 Nights

Reference: 2023 SD WEB
Date of Issue: 17 August 2022



[Click here to view your Digital Itinerary](#)

Introduction

A holiday program that highlights a few of Namibia's conservation success stories. We firmly believe in this as we were the first African country to incorporate protection of the environment into our constitution, our government has reinforced this by giving its communities the opportunity and rights to manage their wildlife through communal conservancies. Your travels will take you to Reserves, National Parks and conservancies where time may be spent on activities and in discussion with staff and their experiences.

Start	Accommodation	Destination	Basis	Room Type	Duration
Day 1	Hilltop Guest House	Windhoek	B&B	1x Deluxe Twin Room 2	1 Night
Day 2	Okonjima Plains Camp	Okonjima Nature Reserve	D,B&B	1x Plains Camp View Rooms	1 Night
Day 3	Onguma Bush Camp	Onguma Game Reserve	D,B&B	1x Deluxe Rooms	2 Nights
Day 5	Anderssons At Ongava	Ongava Private Game Reserve	D,B&B	1x Standard Suites	1 Night
Day 6	Grootberg Lodge	Palmwag	D,B&B	1x Double Room	2 Nights
Day 8	Camp Kipwe	Twyfelfontein	D,B&B	1x Bungalow Rooms	1 Night
Day 9	Strand Hotel Swakopmund	Swakopmund	B&B	1x Standard Room	2 Nights
Day 11	Wolwedans Desert Lodge.	NamibRand Nature Reserve	FB	1x Chalet	2 Nights

Key

B&B: Bed and Breakfast

D,B&B: Dinner, Bed and Breakfast

FB: Full Board - Dinner, Bed, Breakfast and Lunch

Price

Accommodated program:

01 November 2022 - 30 June 2023: 2 adults sharing room: from NAD72 215.00 per person sharing

01 July 2023 - 31 October 2023: 2 adults sharing room: from NAD79 700.00 per person sharing

A valid driver's license is required for all drivers. If this license is not printed in English it must be accompanied by an International Driver's License or an EU drivers licence is also acceptable.

Included

- Accommodation as indicated in the itinerary.
- Vehicle – double cabin 4x4: Collision damage waiver, Second Driver Fee, Stamp Duty Fee, Second Spare Tyre, Tyre & windscreen cover, Standard Accessories - Radio/CD, Air conditioner, Tow rope, Jumper cables, Spare wheel, jack and wheel spanner, tyre gauge. Unlimited kilometres, roadside assistance and recovery charges (only if damage not caused by negligent driving), VAT. Vehicle is not insured for night-time driving outside

urban areas. Cross border permit to Botswana, South Africa, Zambia & Zimbabwe N\$575, Young driver fee, 23 to 25yrs, N\$ 100 per day, Lost key call out fee (N\$8 per km), Child Safety seat of N\$450 per rental, one way delivery, delivery fees outside Windhoek city border, cross Border Fees if applicable.

- Transfers from/to airport
- VAT + Tourism Levy
- Activities as specified in program

Excluded

- Fuel
- Vehicle exclusions: Blocked deposit of N\$2,000, Late collection/delivery of vehicle outside of office hours N\$ 450, Fuel, Sandblasting damage, Side windows, Contract fee N\$ 90 per rental, Tyre side-wall damage (N\$ 95 per day), Water and under carriage damage, Personal accident insurance, Traffic Fine handling fee of N\$250 in the event of a fine not been settled by the renter, Claim administration fees in the case of theft and/or damage, Tow in charges where damage was caused by negligent driving, Roof or Body damages not caused by accident/collision.
- Meals other than specified
- Additional activities not specified in program
- Park /Entrance Fees (NAD150.00 per person & NAD50.00 per vehicle per day) & sightseeing fees (average NAD100.00 per person per day) – prices subject to change.
- All beverages (bottled water, juices, soft drinks & alcoholic drinks, snacks etc)
- International & regional flights and Airport Taxes (if applicable)
- Travel Insurance
- All expenses of a personal nature

Day 1: Hilltop Guest House, Windhoek



Situated in Central Namibia, the cosmopolitan city of Windhoek serves as the capital of the country. It is home to an international airport and a plethora of restaurants, shops, entertainment venues and accommodation options. The city is clean, safe and well-organised, with a colonial legacy that is reflected in its many German eateries and shops, and the widespread use of the German language. Windhoek has an interesting mix of historical architecture and modern buildings, many of which are worth a look, including the Alte Feste an old fort, the 1896 Christuskirche Christ Church, and the more contemporary Supreme Court.

Day Itinerary

Route: HKIA to Windhoek

Distance: 48km

Journey: You will be met in the arrivals hall of our International airport and transferred into the city of Windhoek. Remainder of day at leisure. Depending on your arrival time we suggest joining a short City & Katutura tour / Penduka - Craft market.

Overnight: Hilltop Guest House [View iBrochure](#)

Beautiful views abound, this 7 en suite bedroom guesthouse offer a modern rural feel with the African undertone. Secure on site parking available. Free wireless internet access available. The Hilltop Guest House in Windhoek, offers bed and breakfast accommodation within a warm and relaxed atmosphere where you will feel right at home.

We are centrally located in a quiet cul-de-sac on top of a hill in Klein Windhoek with a magnificent view of Windhoek and surrounding mountains. At night time this become a wonderland of light and color. We are also close to city center and some restaurants. Transfers to and from the airport can be arranged.

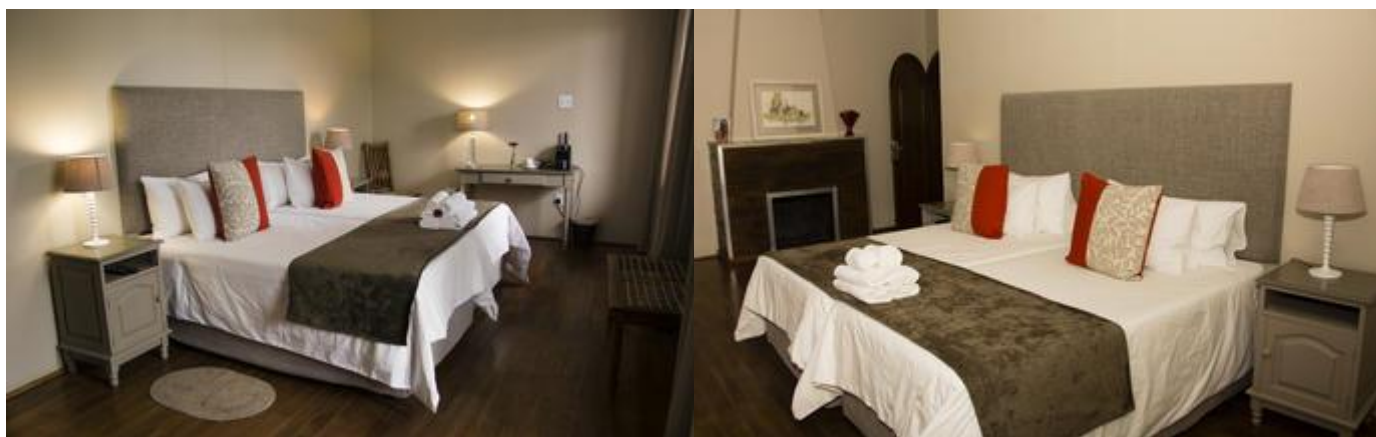
We can accommodate families with children.

We offer 7 elegant en-suite rooms consisting of 3 Luxury rooms and 4 Standard rooms. All rooms are air conditioned and have DSTV and free WiFi.



Deluxe Twin Room 2

Deluxe Double or Twin room with Balcony. Only 1 infant or child allowed per room



Basis

Bed and Breakfast

Day 2: Okonjima Plains Camp, Okonjima Nature Reserve



Midway between the spectacular Etosha National Park and the capital city of Windhoek, lies the well-known Okonjima Nature Reserve. The 22 000 hectare nature reserve is home to AfriCAT, a carnivore sanctuary, which gives the captive cats a second chance to be released back into the wild and become completely independent hunters in a protected area right in the middle of commercial cattle farmland. Visitors can enjoy a stay at a variety of excellent accommodation options including everything from luxury villas to secluded camping. Don't miss the opportunity to enjoy thrilling cat-tracking guided safaris, leopard-spotting, off-road night drives and learn about local San culture along the Bushmen trail.

Day Itinerary

Route: Windhoek to Okonjima:

Distance: 220 km

Journey: After breakfast your car rental agency will collect you and take you to their premises to complete rental contract and do a vehicle check with you. From here you head off on your Namibian holiday.

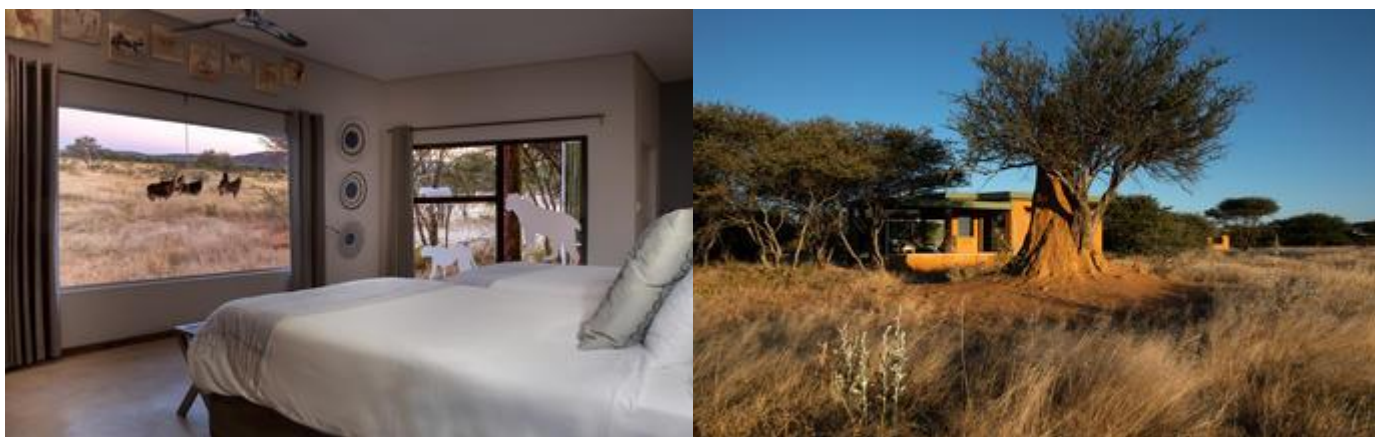
Okonjima Nature Reserve is equally famed for frequent leopard, brown hyaena and pangolin sightings on its safaris, as well as **The AfriCat Foundation**. Since being founded in 1991, AfriCat's mission has been to make significant contributions to conservation, while trying to ensure the survival of Namibia's predators in their natural habitat. It undertakes research and environmental education projects.

Overnight: Okonjima Plains Camp [View iBrochure](#)

Okonjima Plains Camp is within the secluded wilderness area of Okonjima Nature Reserve and has majestic sunset views. Its design honours the Hanssen's family cattle-farming history with its accommodation facility of 10 large View Rooms and 14 spacious Standard Rooms. The Plains Camp Barn includes a dining and lounge area, a curio shop and a terrasse with views over a waterhole and the Okonjima plains.

Game drives in search of elusive leopards and guided bush walks offer visitors an intimate, up-close perspective of Namibia's wildlife and, especially, its most protected species. Whether you hike or are an avid bird watcher, there are endless ways to spend your time at Okonjima.

Okonjima Nature Reserve is recognized as one of the premier places to stay to witness carnivores and other endangered species like the aardvark, pangolin and brown hyaena in the wild and to be educated about conservation. The AfriCat Foundation was born in the early 1990's, a Namibia registered non-profit organization which started out primarily as a welfare organization, and has since become focused on research projects which are essential in accomplishing its mission of the long term conservation of Namibia's wildlife.



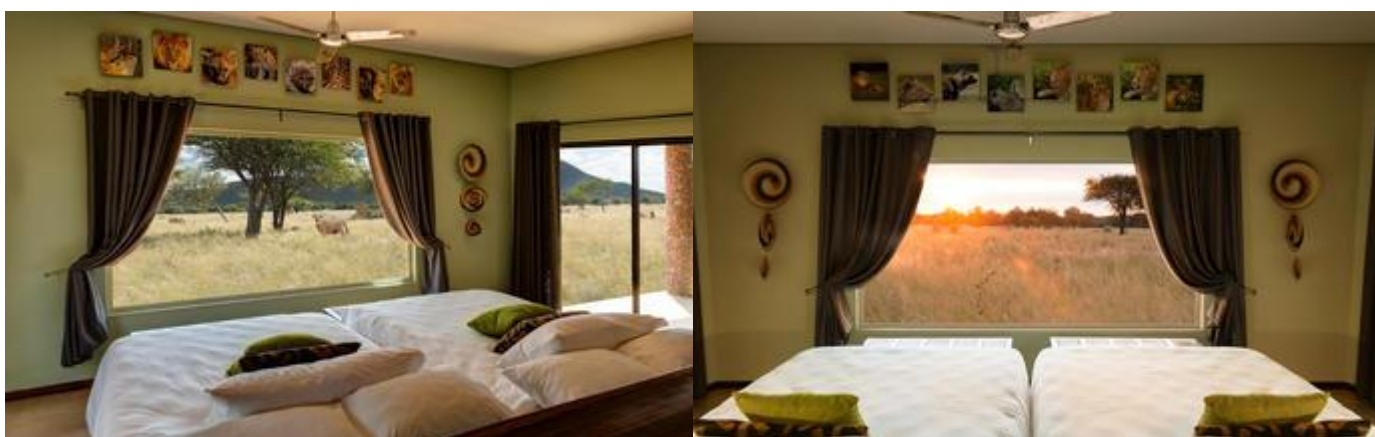
Plains Camp View Rooms

10 View Rooms, upmarket, exclusive and spacious, with a view across the Okonjima plains.

Each room has a large verandah, a wheel-chair friendly ramp and the rooms are set 25m - 75m apart.

The rooms each have 2 double beds, a desk and comfortable reading chair, a large verandah, a mini-fridge for own use, a coffee/tea station, 2 roof-fans, twin basins and a large, twin shower, a safe for valuables and a telephone to contact reception.

The new, exclusive View Rooms are more spacious than the Standard Rooms and are set further apart, providing more privacy.



Optional

Okonjima Nature Reserve

Leopard tracking: many of the leopards are radio-collared for their protection and as part of the density research project through AfriCat's conservation initiative. They roam freely and hunt within the 200sq km reserve.

Specialized activities: Rhino tracking on foot & Pangolin tracking are offered weather permitting and at management discretion.

Endangered Species drive: This game-drive allows more time to enjoy and understand the Okonjima Nature Reserve as a natural island bound ecosystem. As the private, Nature Reserve was established primarily to conserve some of our more threatened mammal species, it provides an increased chance to encounter these relatively rare animals. This is once again assisted by the AfriCat Foundation's research projects on the shy Brown Hyena, Aardvark, Bat-eared fox and Rhino. There are more than 40 mammal species within the Okonjima Nature Reserve, both large and

small as well as a good representation of the typical flora. At the discretion of your guide, there may be the chance to view some of these animals, large or small.

No pre-bookings needed: Night hide (for guests at Bush Camp only) and Night Drive are offered weather permitting and at management discretion.

Okonjima Nature Reserve

Midway between the spectacular Etosha National Park and the capital city of Windhoek, lies the well-known Okonjima Nature Reserve. The 22 000 hectare nature reserve is home to AfriCAT, a carnivore sanctuary, which gives the captive cats a second chance to be released back into the wild and become completely independent hunters in a protected area right in the middle of commercial cattle farmland. Visitors can enjoy a stay at a variety of excellent accommodation options including everything from luxury villas to secluded camping. Don't miss the opportunity to enjoy thrilling cat-tracking guided safaris, leopard-spotting, off-road night drives and learn about local San culture along the Bushmen trail.



Basis

Dinner, Bed and Breakfast

Day 3: Onguma Bush Camp, Onguma Game Reserve



Situated east of Etosha, bordering Fisher's Pan, Onguma Game Reserve is one of Namibia's best-kept secrets. The reserve offers visitors the opportunity to experience Africa in all her beauty and diversity. Onguma Game Reserve features over 34000 hectares of protected land scattered with a variety of wildlife including plains game, black rhino, kudu, giraffe, zebra, lion, cheetah, leopard and more than 300 bird species. The seasonal rains attract thousands of

migrating birds to the Fisher's Pan wetland area. The neighbouring Etosha National Park is home to a rich array of wildlife, including four of the Big 5. Visitors can enjoy game drives, guided walks and rhino research drives within the private reserve as well as wildlife safaris into Etosha National Park to view abundant game in the largest national park in Namibia.

Day Itinerary

Route: Okonjima to Onguma

Distance: 350 km

Journey: An early morning activity before you depart, either to the AfriCat Foundation or leopard tracking before you head north via the towns of Otjiwarongo and Tsumeb to a private reserve situated on the eastern border of Etosha National Park.

As well as being a popular safari lodge, the Onguma Nature Reserve provides a unique sanctuary for wildlife populations, including the critically endangered Black Rhino. In 1993 black rhino numbers dropped by a staggering 96%, which is when Namibia's Ministry of Environment and Tourism decided to take matters into their own hands and set up the ambitious Black Rhino Custodianship Programme. Since then, all black rhino in Namibia are state owned; the concept of Namibia's Black Rhino Custodianship Program is that breeding populations of black rhino are relocated to suitable habitat where the landholders are willing and able to undertake the responsibility of providing care and security to them.

As the custodians of this unique nature reserve, it is our duty to help and protect the wildlife within for the survival of the species. Not only Rhino, but all animals. Without our input and protection, wildlife will go extinct very soon as greed and power dictate demand.

Visiting Onguma is not only about experiencing wildlife in a natural environment, more importantly it is about helping to protect it.

Overnight: Onguma Bush Camp [View iBrochure](#)

Onguma Bush Camp is ideal for families who would like to have a base from which they can explore Etosha National Park. Upon your return, relax and cool off around the swimming pool while watching a spectacular sunset... and the children can run around on the lawns as this is an enclosed camp.

Dinner is served in the dinning area overlooking a large waterhole. Here you will be treated to an excellent combination of European and traditional African cuisine while watching the game coming to drink.

The new water-level hide will provide hours of game viewing opportunities for guests.

Onguma Nature Reserve now offers an opportunity to start a safari from the moment guests touch down at the private airstrip!



Deluxe Rooms

These twin bedded Waterhole or Pool side rooms have stunning views over the surrounding bush. Each room has a large en-suite bathroom and small patio from which to admire the view.



Optional

The AfriCat Foundation

Onguma sundowner drive

The AfriCat Foundation

The AfriCat Foundation was founded in the early '90s and formally registered as a non-profit organisation in August 1993. The Foundation has since grown significantly and what started out primarily as a welfare organisation, has over the years, identified the need to focus on education and research, as being essential to accomplishing our mission – the long-term conservation of Namibia's large carnivores.



Basis

Dinner, Bed and Breakfast

Day 4: Onguma Bush Camp, Onguma Game Reserve

Day Itinerary

Journey: Own game drives into Etosha National Park or book onto one of the many lodge activities.

Optional

Onguma Onkolo Hide
Onguma Nature drives
Onguma Etosha Game Drive
Onguma Interpretive Bush Walks

Onguma Onkolo Hide

Onguma Onkolo Hide features Onguma's fabulous new water-level hide which affords guests an opportunity to sit and enjoy nature unobserved. There is a small ablution facility nearby, benches from which to view the surroundings and lots of windows and vantage points for creative camera angles.



Onguma Etosha Game Drive

Onguma Etosha Game Drive takes guests into the Etosha National Park in the mornings and afternoons, accompanied by experts tour guides in open-sided vehicles. Guests will have an opportunity to see about 114 species of mammal in Etosha. They include the black-faced impala and the threatened black and white rhino. There are however no buffaloes, hippos, crocodiles or monkeys, but there is enough to keep guests enthralled on the game drive.



Onguma Interpretive Bush Walks

Onguma Interpretive Bush Walks features a unique physical, mental and spiritual adventure through nature. Visitors will experience the sights, smells and sounds of the Namibian bush by conducting an early morning leisurely walk

accompanied by experienced armed rangers. The interpretive walks will bring visitors closer to nature by exposing them to the intimate detail of the surroundings.



Basis

Dinner, Bed and Breakfast

Day 5: Anderssons At Ongava, Ongava Private Game Reserve



Sharing the southern boundary with Etosha National Park, the prolific 30 000-hectare private Ongava Game Reserve is considered one of the top private game reserves in the region, enjoying global recognition for exceptional conservation, ground-breaking research and exciting safari experiences. The landscape is characterised by vast open plains dotted with salt pans and abundant wildlife. Visitors can easily access Etosha through Andersson's Gate in the south.

Known for its luxury lodges made out of natural materials, Ongava is a popular destination for those looking to immerse themselves in nature. The reserve offers visitors the perfect combination of wildlife safari experiences within and around the Etosha National Park. One of Ongava's top attractions is its rhino population and guests can experience the thrill of getting close to these majestic creatures. Popular activities include: night game drives, guided nature walks, bird watching and 4x4 guided game drives.

Day Itinerary

Route: Onguma to Ongava

Distance: 200 km +

Journey: Enter the world renowned Etosha National Park, this will be in your rental touring vehicle as you traverse from the Namutoni region to Okaukuejo. Ongava Reserve which shares a common boundary with the Etosha National Park and is considered one of the finest private game reserves in the region, enjoying global recognition for exceptional conservation, ground breaking research and exciting safari adventures. Cutting edge research into the genetics of

Ongava's rhino population is just one example of how the work being done at Ongava is making a difference to conservation not only in Namibia but also throughout Africa. As the base for ORC, Anderssons at Ongava provides an interactive hub for guests to learn about conservation science, where cutting edge technology meets hands on, field-based research.

Overnight: Anderssons At Ongava [View iBrochure](#)

With pressing environmental issues threatening our future, Ongava is once again responding to the needs of the planet and our guests with the creation of Anderssons at Ongava and the Ongava Research Centre (ORC), the next generation in eco-tourism.

Taking a lesson from the wild in the power of symbiotic relationships, Anderssons at Ongava provides an interactive hub for guests to be a part of conservation science, where cutting edge technology meets hands on, field-based research.

Guests at Anderssons at Ongava have the option of being immersed in and can contribute to developing creative, knowledge driven solutions with resident scientists, visiting researchers, conservationists and rhino security personnel, or simply relaxing and enjoying the luxurious guest suites, waterhole, viewing hide, and pool where they will find their own personal place for reflection.

Ensuring a light footprint and an exceptional experience, Anderssons at Ongava will have seven contemporary designed luxury guest units and one family unit, accommodating a maximum of 18 Guests.



Standard Suites

6 x twin-bedded suites with 2 x three quarter beds and 1 x double suite with one queen-size bed.

The suites are designed as a direct extension of the landscape itself. The rock and other natural elements are used to reflect the environment and drama of Etosha. The natural stone and spacious solid build with innovative roof structure, offers guests a climate-controlled sanctuary in the bush. Design includes a private viewing deck with 180-degree panorama.



Activities

Etosha National Park

Etosha National Park

Situated in north-western Namibia, the Etosha National Park offers a premier game viewing experience. The park's diverse vegetation ranges from dense bush to open plains attracting a variety of wildlife. Located in the heart of the park is the Etosha Pan - a shallow depression that covers an area of 5000 square kilometres. Dry and shimmering for most of the year, the pans fill up with water after seasonal rains, making it the perfect habitat for wildlife. In the dry season, the wildlife is attracted to the perennial springs and waterholes that makes for excellent game viewing. Visitors can look forward to world-class game viewing including a variety of large mammals such as lion, elephant, leopard, rhino, zebra, giraffe, a diversity of birdlife such as flamingoe and pelicans.



Basis

Dinner, Bed and Breakfast

Day 6: **Grootberg Lodge, Palmwag**



Palmwag is a nature reserve idyllically located along a palm-lined tributary of the Uniab River, halfway between Swakopmund and Etosha, providing an ideal base from which to see the sights of the Kunene region or embark on one of the many local hiking trails. Water is scarce in this area, so the river's presence often lures elephants closer to the camps. The reserve is notable for its unusual species of palm tree, the *hyphaene petersiana*, and for being home to the largest population of southwestern black rhinos in Africa. Animal lovers can also get a peek at leopard, lion, cheetah, mountain zebra, Angolan giraffe, springbok, kudu, and African bush elephant.

Day Itinerary

Route: Ongava to Grootberg Lodge

Distance: 245km

Journey: Your travels today take you through commercial farmlands to the Etendeka Plateau and one of our community conservation success stories - Grootberg Lodge perched over the Klip River plateau. 12 000 hectares have been set aside by the #Khoadi//Hoas community for conservation and tourism, and it is through this pristine wilderness that you can explore either on foot or by car to encounter the inhabitants of this remote area. The lodge is a landmark in the Namibian tourism industry as its revenue streams provide direct benefits to the community: not only employment but also assistance in mitigating the human-wildlife conflict via specific funds set aside by the business in conjunction with continuous monitoring of the wildlife thanks to the cooperation of Grootberg guides with SRT (Save The Rhino Trust) and the community shepherds. The lodge also supports other conservancy's projects, e.g. by purchasing vegetables grown by the local farmers, by financing an education fund and by collecting garbage to minimise pollution in the area.

Overnight: Grootberg Lodge [View iBrochure](#)

14 Twin and 2 family rock and thatch chalets gaze out over the Klip River Valley, where Black Eagles hunt just below your private deck. Two family units provide enough space for parents and two children to share comfortably.



Double Room

Room with double bed.



Optional

Grootberg Lodge sunset drive

Basis

Dinner, Bed and Breakfast

Day 7: Grootberg Lodge, Palmwag

Day Itinerary

Journey: We suggest taking joining either the rhino or elephant tracking programs today, ending off your day with a scenic drive or sundowner.

Optional

Grootberg Lodge Rhino Tracking
Grootberg Lodge Elephant Tracking
Grootberg Scenic Drives
Grootberg Guided Walks
Grootberg Lodge Damara Cultural Tour

Grootberg Lodge Rhino Tracking

Grootberg Lodge Rhino Tracking involves guests being taken on an unforgettable exploration on foot amidst the cliffs of the Klip River Valley and rising plateau of volcanic basalt ridges, by dedicated guides and local trackers. The activity is managed, and the number of guests participating is restricted to a maximum of 10 people per day, to ensure that it is both natural and non-obtrusive for the animals.

Grootberg Lodge Elephant Tracking

Grootberg Lodge Elephant Tracking is one of the most popular activities at the lodge. Guests set out in the early morning with a guide and a tracker to the surrounding farms in search of elusive desert elephants. Since the elephants roam free in the conservancy, sightings cannot always be guaranteed but the experience also gives one the opportunity to

learn and appreciate more about the lifestyle of the local people. Lunch is provided in the shade of a tree in the remote wilderness of Damaraland. Guests can expect to return to the lodge during the early afternoon enriched by the beauty of Damaraland and its unique elephants.



Grootberg Scenic Drives

Grootberg Lodge is situated in the Damaraland on the Etendeka Plateau and offers twice daily scenic drives on top of the plateau. Guests can experience a variety of wildlife sightings including zebra, antelope, jackal, springbok, kudu and oryx and occasionally leopard and lion. Grootberg Lodge is wholly owned by the local community and the continuous conservation efforts have resulted in wildlife numbers growing in this conservancy.



Grootberg Guided Walks

Grootberg Lodge is situated in the Damaraland on the Etendeka Plateau and offers daily guided scenic walks on top of the plateau. The first 3-hour tour begins after breakfast at 07h30. The knowledgeable guides take guests through the Etendeka mountains focussing on the various inhabitants, fauna and rock formations.



Grootberg Lodge Damara Cultural Tour

As part of the Grootberg Lodge Damara Cultural Tour, guests will be guided through the surrounding conservancy farms in which Grootberg Lodge is located, visiting the authentic homesteads of the Damara people. This allows guests an exclusive opportunity to spend time with their hosts, getting to understand their origins, cultures, traditions and approach to human-wildlife conflict farming within the harsh conditions of the desert they call home.

The tour includes a visit to the #Khoadi //Hoas Conservancy office where guests will meet the staff and gain some insight into the positive impacts and benefits that the conservancy enjoys as a result of owning the Grootberg Lodge. The tour concludes with a visit to Erwee Primary School and a cultural performance by the pupils, followed by lunch under the trees in a remote spot of the Damaraland wilderness.

Guests will depart from the lodge in the morning and return after lunch, and there is a minimum allowance of 2 guests per excursion and a maximum of 9 guests per vehicle.

Basis

Dinner, Bed and Breakfast

Day 8: Camp Kipwe, Twyfelfontein



Set in the Kunene Region of north-western Namibia, Twyfelfontein is a spectacularly scenic area, featuring one of the largest and most important concentrations of rock art in Africa. The name 'Twyfelfontein' translates to 'Fountain of Doubt', which refers to the perennial spring situated in the impressive Huab Valley flanked by the slopes of a sandstone table mountain. It was this spring that attracted Stone Age hunters over six thousand years ago, and it was during this time that the extensive group of rock engravings and paintings were produced. Visitors can look forward to basing themselves at some wonderfully shady campsites along the Aba-Huab riverbed, while exploring over thirty different sacred ritual sites of the traditional hunter-gatherer communities.

Day Itinerary

Route: Grootberg Lodge to Camp Kipwe

Distance: 130 km

Journey: Travel down the Grootberg Pass exploring more of Damaraland where the flora and fauna have adapted perfectly to the harsh weather conditions. Areas of interest include the rock engravings at Twyfelfontein, a UNESCO world heritage sight. In addition geological sites such as the Organ pipes and Burnt Mountain are worth a visit and for a great cultural experience visit the Damara Living Museum.

The Lodge prides itself in being a part of the conservancy they operate in. They invest in the backbone of their structure, our people, through amongst other training and are currently in the process of setting up a community vegetable garden

so as to purchase vegetables from a community-based vegetable garden in the conservancy as well as supporting other projects such as the expansion of the waterhole to ensure a herd of 18 elephants have enough to drink when they pay a visit. Their interests span far beyond the conservancy with support of the desert lion project. To preserve their natural environment, indigenous plants which are harvested and replanted around the lodge and waterhole. They 'reduce, reuse and recycle' all refuse and use energy saving bulbs as well as solar geysers to reduce the carbon footprint.

Overnight: Camp Kipwe **[View iBrochure](#)**

Camp Kipwe is an intimate and remote bush lodge located in Namibia's arid yet starkly beautiful Twyfelfontein region, home to many ancient Bushman etchings. The 9 specially-designed rooms are unique and private, with an outdoor bathroom, thatched roofs and spectacular views over the surrounding area. A luxury thatched suite with a lounge equipped with air-conditioning, a satellite television, a double room with en-suite bathroom, laundry service and a mini-bar.

Camp Kipwe offers guided nature walks around the Twyfelfontein Conservancy, as well as trips to see the Bushman etchings, the mysterious Organ Pipes and Burnt Mountain. For a very special experience, an Elephant Nature Drive is a must-do; explore the terrain in search of these elusive desert-dwelling elephants who have adapted to the dry and sandy conditions of northern Namibia.



Bungalow Rooms

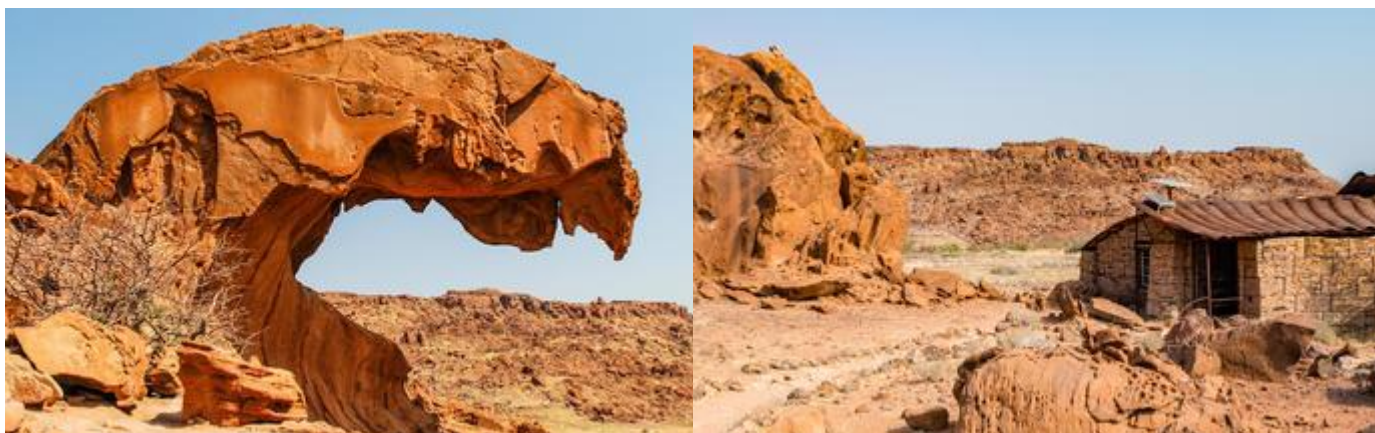
The twin-bedded rooms are in the shape of rondavels and have boulder, cement and rock walls ensuring that on entry, feel like a cool secluded cave with outside decks to admire the view. The en-suite, open-air private bathrooms are built amongst the rocks, allowing guests to take advantage of the outdoor weather. Hot water is supplied by wood-burning 'donkey' boilers and solar geysers.



Twyfelfontein

Set in the Kunene Region of northwestern Namibia, Twyfelfontein is a spectacularly scenic area, featuring one of the largest and most important concentrations of rock art in Africa. The name 'Twyfelfontein' translates to 'Fountain of

Doubt', which refers to the perennial spring situated in the impressive Huab Valley flanked by the slopes of a sandstone table mountain. It was this spring that attracted Stone Age hunters over six thousand years ago, and it was during this time that the extensive group of rock engravings and paintings were produced. Visitors can look forward to basing themselves at some wonderfully shady campsites along the Aba-Huab riverbed, while exploring over thirty different sacred ritual sites of the traditional hunter-gatherer communities.



Damara Living Museum

Observe and experience the traditional Damara way of life right in the heart of their traditional homelands. A unique opportunity to see a way of life that is slowly dying out.

Open daily.



Basis

Dinner, Bed and Breakfast

Day 9: Strand Hotel Swakopmund, Swakopmund



Set along Namibia's spectacularly scenic coast, the seaside town of Swakopmund is known for its wide-open avenues, colonial architecture, and its surrounding otherworldly desert terrain. Founded in 1892 as the main harbour for German South-West Africa, Swakopmund is often described as being more German than Germany. Now a seaside resort town, Swakopmund is the capital of the Skeleton Coast tourism area and has plenty to keep visitors happy. The quirky mix of German and Namibian influences, adventure options, laid-back atmosphere and cool sea breeze make it a very popular Namibian destination. Visitors can look forward to a number of exciting activities including: quad biking, horse riding, paragliding, fishing, sightseeing and fascinating desert tours.

Day Itinerary

Route: Camp Kipwe to Swakopmund

Distance: 322 km

Journey: The mining town of Uis would be your first stop today, the settlement was established in 1958 when it was a tin mining hub, today it is well known for its local mineral wealth although the open pit mine has closed there are some 3600 inhabitants. Being on the main road between the coast and interior as well as at the base of the Brandberg Mountain, Namibia's highest peak, Uis sees a reasonable amount of traffic, by Namibian standards.

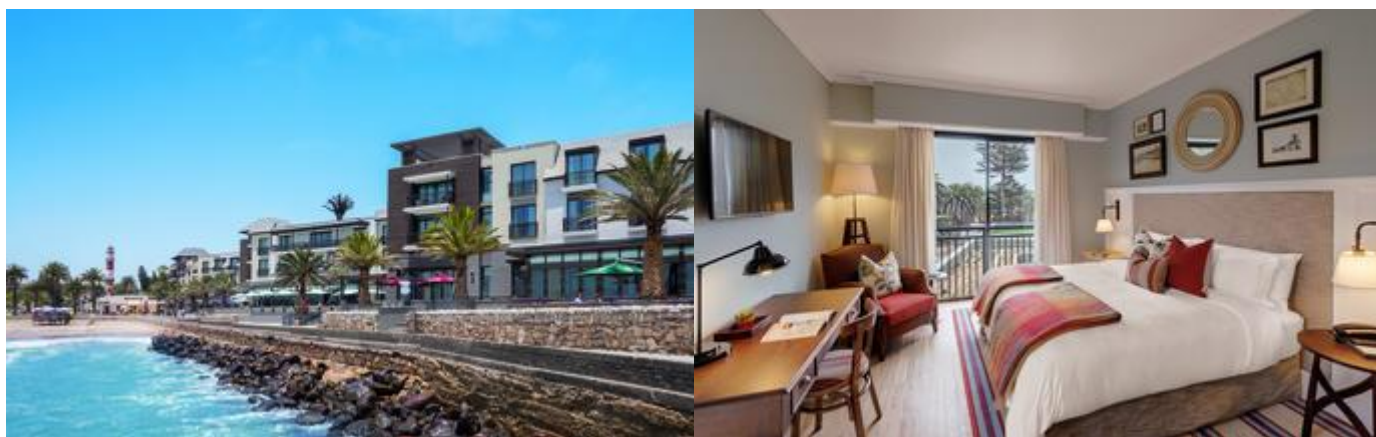
Once you've crossed the gravel plains to reach the coastal road we suggest you head north to visit Cape Cross seal Reserve before heading down past the town of Henties Bay to Swakopmund.

Overnight: Strand Hotel Swakopmund [View iBrochure](#)

With its extensive, unique and creatively entertaining Restaurants, Bars, Deli, Lobby-Lounge, Sea Facing Terraces, Beach Kiosk and state of the art Conference & Banqueting Center, all set on the Mole, a historic and iconic site surrounded by Ocean on three sides, the Strand Hotel Swakopmund is a social epicenter and destination in itself for all visitors to and residents of Swakopmund.

Its architectural inspiration finds its roots deep in Namibian-German history and reflects this in a tasteful contemporary manner. The interiors are residential in nature, and the brief to all designers involved was to create a non-hotel, hotel. One as charming and welcoming as the town it is located in. Simply very warm and comfortable, and as they say in German: "gemütlich" providing a genuine "sense-of-place" atmosphere adding to any Namibian visit.

Arriving at the Strand is a dramatic experience as one passes through its 13m high and 9m wide Ocean View Atrium which travels right through the Hotel offering sea views at either end. Off this Atrium Lobby is Reception, consisting of three individual desks and an inviting open fireplace which rounds off the residential feel and warm welcome.



Standard Room

Panoramic and sliding windows with views of the beach (55 rooms) or gardens (17 rooms). Each has an en-suite bathroom with shower, single vanity and separate toilet. All Standard Rooms are designed to accommodate up to 2 adults and 1 child in a cot.



Optional

Cape Cross

Cape Cross

The small headland of Cape Cross lies on western Namibia's Skeleton Coast, roughly 60 kilometres north of Henties Bay. The historic area was landed on by the Portuguese in 1486, and they erected a stone cross here in honour of the Portuguese King, however, this cross was replaced by the German settlers in the 1800's. Cape Cross best known for its extraordinary breeding colony of Cape fur seals and has been made a reserve. With the abundance of fish swimming in the cold Benguela current, the seals have plenty to snack on, and they also enjoy lying and playing out in the sun. From a 200-metre-long walkway, watch the seals at play and learn about them through the area's information points.



Basis

Bed and Breakfast

Day 10: Strand Hotel Swakopmund, Swakopmund

Day Itinerary

Journey: Day at leisure in this coastal town - there are quite a number of optional activities, in addition to those listed there is also sandboarding, quad biking, Swakopmund cultural tours, and scenic flights over the coastline and interior.

Optional

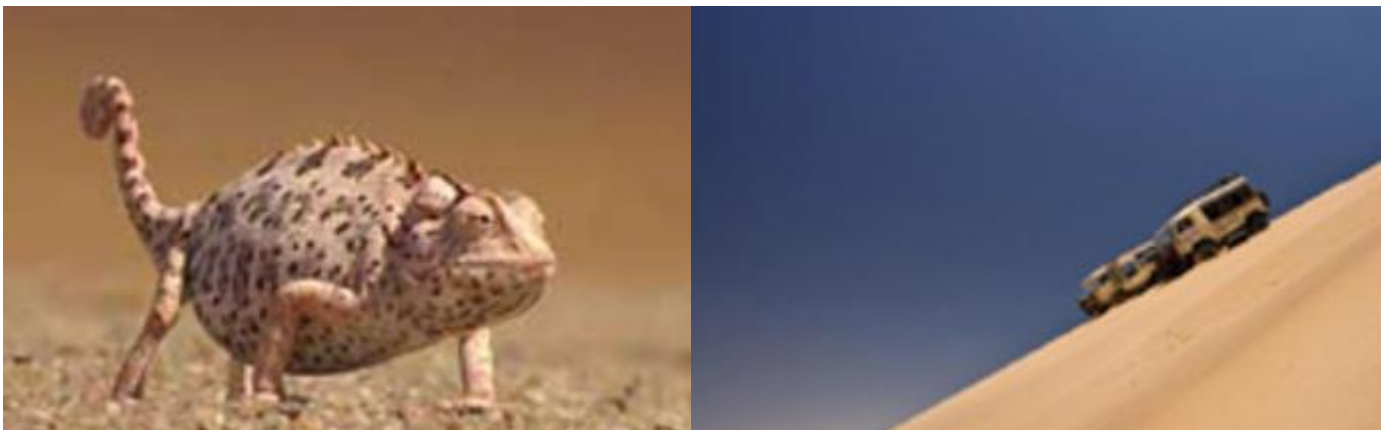
Tommy's Tours and Safaris Living Desert Tour

Catamaran Charters

Sandwich Harbour 4x4

Tommy's Tours and Safaris Living Desert Tour

The Living Desert Tour, originally developed by Tommy himself in the 1990's, is a unique 4x4 adventure drive through the dunes outside Swakopmund, Namibia. Just the drive in the dunes is an amazing experience, but Tommy will show you a lot more than sand. The tour takes you from the vegetated, life-rich eastern side of the dunes, right through the dunes to the Atlantic Ocean on the western side of the dune belt.



Catamaran Charters

The Catamaran Charters Team invites you aboard the 45ft Royal Cape Sailing Catamaran Silverwind, or the 60ft Simon Sailing Catamaran Silversand, or the 40ft Admiral Motorised Catamaran Silvermoon, to enjoy an adventure packed tour to Pelican Point and Walvis Bay's beautiful bay area.

The chances of encountering dolphins, whales, turtles, seals and Mola Mola (sunfish) make the search for the marine big 5 and adventurous tour by enjoying sparkling wine, fresh oysters and other mouth-watering snacks aboard the spacious and comfortable catamarans.



Sandwich Harbour 4x4

Sandwich Harbour 4x4 is a safari company based in Walvis Bay, Namibia, offering 4x4 excursions to Sandwich Harbour, Marine Dune Days, Kayak Combos and Bird Watching Activities in the Wetlands around Walvis Bay.



Basis

Bed and Breakfast

Day 11: Wolwedans Desert Lodge., NamibRand Nature Reserve



Spanning an area of 172,200 hectares and encompassing four distinct ecosystems, the NamibRand Reserve of southern Namibia is among the largest privately owned game parks in Southern Africa. Founded to conserve the unique environment and wildlife species of the Namib Desert, the park's mix of dunes, mountains, rocky outcrops, sandy flats, and gravel plains provides habitats for a diversity of mammals, including hyenas, jackals, foxes, antelopes, and various wild cats. A plethora of bird species, reptiles, insects, and frogs also have their home here, alongside an array of plant species. Discover the mysterious 'fairy circles', unexplained bare patches in the sand, or enjoy a night of sublime stargazing - having been named Africa's first International Dark Sky Reserve, it is one of the least light-polluted areas in the world.

Day Itinerary

Route: Swakopmund to NamibRand Nature Reserve

Distance: 432 km

Journey: An early start is recommended today. You can either travel to Walvis Bay and head inland from there, or drive to the Moon Landscape and Welwitschia Plains before heading down to the Namib Desert.

Travel via the Kuiseb and Gaub Canyons to the settlement of Solitaire and on to the NamibRand Nature Reserve.

A private nature reserve established to help protect and conserve the unique ecology and wildlife of the south-west Namib Desert. Conserving the pro-Namib, the area along the eastern edge of the Namib Desert, is critically important in order to facilitate seasonal migratory wildlife routes and to protect biodiversity. It is probably the largest private nature reserve in southern Africa, extending over an area of more than 200,000 ha. The Reserve shares a 100km border with the Namib-Naukluft National Park in the west and is bordered in the east by the imposing Nubib Mountains. Virtually all facets of the Namib Desert are represented on the Reserve – sand and gravel plains and stretches of savanna alternate with mountain ranges, inselbergs and vegetated dune belts.

Please note: the NamibRand Nature Reserve does not offer drives to Sossusvlei or Dead Vlei, all activities are based on their Reserve only. For travelers wanting to visit Sossusvlei this is best done by adding a night prior to arrival at Wolwedans after your stay in Swakopmund, This would allow an early morning visit to the dunes (best time to view) before heading down to the lodge to arrive in time for lunch and an afternoon activity (both optional extras).

Overnight: Wolwedans Desert Lodge.

Previously known as Wolwedans Dunes Lodge, the new Desert Lodge is undergoing a shake-up and comes back as a hospitality training facility. This is part of the Wolwedans Desert Academy based at the Village at Wolwedans.

The building style is a combination of wooden structures and canvas blinds, opening up to the desert beyond. The lodge reflects the ambiance of a tented camp but provides the comfort and protection of a permanent building. Desert Lodge offers a spacious main area consisting of two lounges, a number of sundowner decks, a fireplace, a tea deck, a library, the wine cellar, and two dining rooms. The lodge also has a swimming pool, which is suspended above the dune behind the lodge with views towards the dunes. All communal areas of the lodge open out onto decks with superb views. The variety of recreational spaces makes a visit both exciting and relaxing.



Chalet

The tented chalet with an elevated deck on top of a dune plateau sleeps 2 adults in a king-size bed. The en-suite bathroom offers a double vanity, shower & toilet facilities. 2019 Fully Inclusive Package. 2020 Full Board + Shared Activities.



Activities

Kuiseb Canyon

The Moon Landscape

This area is traversed by the Tropic of Capricorn and is mostly flat, although some scenic canyons and elevations are found in some areas, for example in the Moon Valley system. While most of the soil is rocky, sand dunes are still occasionally found in this region; for example, sand dunes occupy much of the coastline between Walvis Bay and Swakopmund.

The location can be accessed via a picturesque drive through the Namib-Naukluft Park. An eerie mysterious landscape has been constructed through years of erosion of soft layers of earth that were deposited in this area over 450 million years ago.



Welwitschia Drive

Welwitschia Drive is a stretch of scenic road through the desert in the northern corner of the Namib Naukluft National Park. The route passes by 13 numbered stone beacons, each indicating a point of interest. The route ends at one of Namibia's oldest and also largest Welwitschia plants.

Tour guide Tommy Collard will take visitors on this 50 km drive in a 4x4 vehicle, pointing out things of interest, answering questions, and making sure that nothing of importance is missed. Tommy Collard has been involved in conservation, tourism, herpetology and farming all his life and offers a rich store of information that will keep visitors interested.



Kuiseb Canyon

Mysterious and remote, the Kuiseb Canyon was carved aeons ago by the Kuiseb River, which runs mainly underground. This deep fissure is flanked by steep folds of rock on one side and the copper-coloured sand dunes of the Namib Desert on the other, and shelters several wildlife species that are acclimatised to the region's harsh environment, including hyena, buck and even leopard.



Basis

Full Board - Dinner, Bed, Breakfast and Lunch

Day 12: Wolwedans Desert Lodge., NamibRand Nature Reserve

Day Itinerary

Journey: Wolwedans Scenic Drives & Wolwedans Walking Safaris.

Activities

Wolwedans Scenic Drives
Wolwedans Walking Safaris

Wolwedans Scenic Drives

The Wolwedans camps are located in the heart of the NamibRand Nature Reserve and provide the perfect base from which to explore the surrounding Namib Desert. The camps offer scenic drives in open 4x4 safari vehicles accompanied by a knowledgeable guide.

Sunset drives take 1-2 hours and guests travel about 10 km into the dunes for sundowner drinks. Morning and afternoon drives cover a distance of 40-50 km and take 3-4 hours. The afternoon scenic drives often turn into sunset drives into the dunes. The popular day drive covers a distance of about 120 km and offers the highest degree of diversity in landscape scenes. Guests depart the camps after breakfast, enjoy a picnic lunch en route and return to camp before sunset.

***Wolwedans Walking Safaris***

The Wolwedans camps offer a unique 2-night walking safari on the TokTokkie Trails in the southeast concession of the NamibRand Nature Reserve. The guided activity includes following in the footsteps of the local Bushmen (San) and distances do not exceed 10 km daily. Meals and drinks are included and guests are accommodated on comfortable camp beds under the starry skies each night.



Basis

Full Board - Dinner, Bed, Breakfast and Lunch

Day 13: End of Itinerary

Day Itinerary

Route: NamibRand Nature Reserve to Windhoek

Distance: 390 km

Journey: Your drive today takes you back to Windhoek via the town of Rehoboth.

Please note: outbound flights to be booked for late afternoon / early evening, alternatively spend the night in Windhoek and depart Namibia the following day.

Basis

Bed and Breakfast

Terms and Conditions

C Africa Safari & Tours Terms and Conditions

- The traveller/agent is responsible for obtaining any necessary visas, travel permits and Travel Insurance.
- The traveller/agent is responsible for determining what, if any, vaccinations, health or safety precautions are necessary or recommended.
- The traveller/agent is responsible to have a 7-days negative PCR Test (from swab until arrival) indicating that the traveller is COVID 19 NEGATIVE upon arrival. Must be in English and on paper Proof of Vaccination will be an advantage. Please note that airlines and your country of origin may have different requirements, it is the travellers responsibility to ensure they are aware of their re-entry requirements.
- All quotations and confirmations are based upon the information provided at the time of confirmation. It is incumbent upon the traveller/agent to ensure all details are correct. C Africa Safaris & Tours will accept no responsibility for any omissions once the traveller/agent has agreed to the final confirmation.
- We reserve the right to amend/increase the cost should there be an increase in fares, taxes, fuel surcharges, security taxes or any other unforeseen increases even following confirmation.

We further reserve the right to amend/change the itinerary owing to circumstances beyond our control and to ensure the continued enjoyment of the travel program/itinerary.

Payment Policy: A non-refundable deposit of 25% of the full package/services quoted becomes due and payable upon confirmation of any reservation. Deposits can however be re-allocated only once, within a period of 12 months of the original Travel Date, subject to written notice given 61+ Days prior to arrival date. Applicable price of new journey applies.

- Final balances become payable on receipt of the official Invoice and must be reflecting in C Africa Safaris & Tours Account no later than 45 days prior to arrival, failing which, the 25% Deposit will be retained and Services booked will be terminated.
- Where reservations are made within 30 Days of date of arrival, full payment is due within 24 hours of confirmation.
- All bank charges arising from the money transfer must be borne by the remitter.

Cancellation Policy:

- < 60 - 45 Days prior to arrival date: The full Deposit Payment will be retained
- 44 - 31 Days prior to arrival date: 15 % cancellation fee of the remaining balance
- 30 - 15 Days prior to arrival date: 35 % cancellation fee of the remaining balance
- 14 - 08 Days prior to arrival date: 50 % cancellation fee of the remaining balance
- 07 – 01Days prior to arrival date: 75 % cancellation fee of the remaining balance
- No shows: 90 % cancellation fee of the remaining balance.

Please note that all amendments and cancellations have to be received AND RECONFIRMED in writing by C Africa Safaris & Tours. Our cancellation conditions will be strictly enforced in accordance with our standard terms and conditions.

Guests can change or cancel the booking up to 60 days prior to departure in the event of a COVID-19-related reason. (Medical Documents required) For some accommodation/activity's bookings, exclusions and penalties may apply. Guests who cancel but submit a rebooking will receive a credit toward future travel valid only for a period of 12 Months, after which the Credit will be forfeited. Applicable price of new journey applies. Guest is responsible for insurance and other related costs. All other standard terms and conditions apply to the booking.

Child Policy: All children under age 18 must be accompanied by an adult. Note that some accommodations require that children below a certain age share a room with an adult and that not more than 2 Children to share a room.

All minors travelling through Namibia, Botswana and/or South Africa borders will be required to produce certified copies of unabridged birth certificates and valid passports. In the event that one parent is not travelling with the child, the

other parent's affidavit consenting to such travel should be availed. However, an affidavit will not be required if the father's name does not appear on the child's birth certificate.

Guests travelling with children who are not related are recommended to carry documentation which provides evidence they have permission to travel with the child. CAST cannot be held responsible should the guest, child or any member of the travelling party be denied entry to a country due to non-compliance with a country's requirements. If guest, child or any member is denied entry to Namibia/Botswana etc., the standard Cancellation Policy applies.

Force Majeure Policy: Force majeure means unusual and unforeseeable circumstances beyond the control of this company or the control of our suppliers, the consequence of which neither CAST nor its suppliers, could avoid even with all due care, including, but not limited to, war or threat of war; riot; civil strife; terrorist activity (actual or threatened); industrial dispute; technical problems with transport, machinery or equipment; outages or power failures; natural or nuclear disaster; fire, flood, drought or adverse weather conditions; pandemics, epidemics or outbreaks of illness.

In the event of a cancellation or material alteration to the journey as a result of the circumstances as described in this section, CAST may in its sole discretion:

- Offer the guest(s) alternative travel arrangements or products of comparable standard as may be appropriate in the circumstances. CAST will provide a travel credit (within a period of 12 months) to the guest equal to the value of the trip less any sums CAST is not able to recover from any supplier.

CAST cannot assume responsibility for any other travel related costs like insurance, visas and other travel arrangements, etc.

Important Notes: Where supplier terms vary, we reserve the right to amend our cancellation and payments policy. This will be notified to you upon confirmation.

- In the event that payments are not received by C Africa Safaris & Tours on the due date, we reserve the right to cancel the booking in full and apply our cancellation policy in accordance with the above.
- Dietary requirements can only be accommodated if communicated at booking stage.
- All outdoor excursions & tourist attractions and flights are weather permitting.
- Rates are subject to change due to NAD & ZAR currency fluctuation.
- All services are strictly subject to availability at the time of booking.
- General check-in time at Establishments is 14h00 whilst check-out time is 11h00.
- Should clients need to carry medication, they should ensure that they have a doctor's letter to prove that the drugs are medically necessary and for the personal use of the client.
- Hotel grading's listed is based on grading allocation by the Namibian Tourism authorities and do not reflect the same standards as Europe.
- The accommodation is subject to availability at date of booking. We reserve the right to use alternative accommodation of similar or higher standard.
- Smoking is not permitted on board the touring vehicle. Comfort stops are included en route.

COVID INFORMATION: Guest must sign an acknowledgement attesting to their fitness to travel and agreeing to comply with all health protocols as directed by CAST staff during their journey. Guest may not travel if they have tested positive for COVID-19, 14 days prior to departure; standard cancellation terms will apply. Guest must maintain adequate physical distancing and frequently wash or sanitize hands during their journey. Masks are required in vehicles (each guest needs to provide their own masks), indoor spaces, and any outdoor spaces where physical distancing is not possible and in accordance with local regulations. Noncompliance with these measures will result in not being able to continue on the journey. Guest voluntarily accepts all risks and related expenses in the event that they or any member of their travelling party require testing, quarantine or become infected with COVID-19.

The thoughts and ideas suggested in any of our itineraries are intellectual property of C AFRICA SAFARIS & TOURS CC and are subject to the applicable copy right laws. The whole or partial duplication as well as any forwarding to third parties without prior consent of C AFRICA SAFARIS & TOURS CC is not allowed.